

Catalogue No.

AB6717-100

Qty:

300 µg

Anti-mWatermelon

Source: Goat

General description: Goat polyclonal antibody to mWatermelon. mWatermelon is a monomeric fluorescent protein (~27 kDa) engineered from coral-derived fluorescent proteins, originating from the cnidarian *Discosoma* species, and is widely used as a bright reporter and fusion tag for live-cell imaging and protein tracking. It has a maximum excitation at 504 nm and a maximum emission at 515 nm. Unlike GFP, mWatermelon is derived from coral fluorescent proteins and may show limited or no cross-reactivity with anti-GFP antibodies, depending on sequence similarity; therefore, anti-RFP or specific antibodies may be required for reliable detection. It is suitable for applications such as Western blot, immunofluorescence, immunoprecipitation, and ELISA. In Western blot analysis, mWatermelon-tagged proteins are detected at approximately 27 kDa plus the molecular weight of the fused protein. In immunofluorescence, antibodies can enhance signal detection, particularly in fixed samples or low-expression systems. These antibodies are widely used in studies of protein localization, trafficking, and live-cell imaging in mammalian and other model systems.

Alternative names: red fluorescent protein antibody

Form: Polyclonal antibody supplied as a 100 µl (3 mg/ml) aliquot in PBS, 20% glycerol and 0.05% sodium azide. This antibody is epitope-affinity purified from goat antiserum.

Immunogen: N/A

Specificity: In 293HEK cells transfected with cds plasmid detects a band of 26.5 kDa by Western blot. This antibody does not recognize GFP (green fluorescent protein).

Reactivity: Reacts with Transfected cells proteins

Sample	WB	IHC (F)	IHC (P)	IF	ELISA	IEM
Transfected cells	+++	ND	ND	+++	ND	ND

+++ excellent, ++ good, + poor, ND not determined

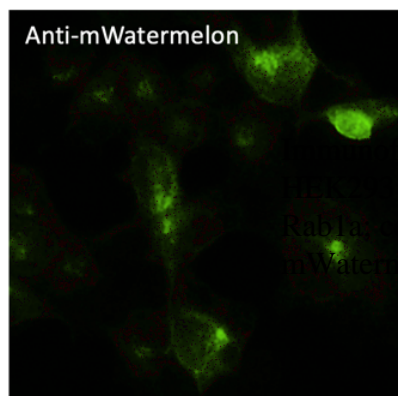
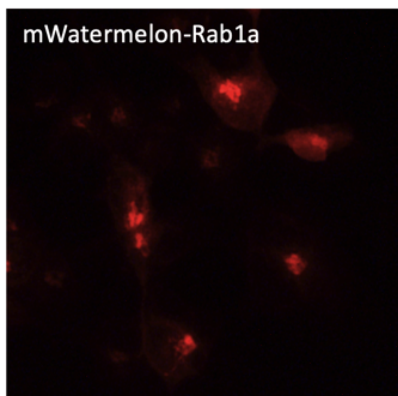
Usage:

WB: 1:500-1:5,000

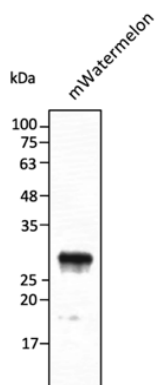
IF: 1:50-1:500

Storage: Store at -20 C for long-term storage. Store at 2-8 C for up to one month.

Special instructions: Avoid freeze/thaw cycles..



Fluorescence – anti-mWatermelon Ab using HEK293 cells transduced with mWatermelon-Rab1a. Cells were fixed with methanol and anti-mWatermelon at 1/250;



Anti-mWatermelon Ab at 1/2,500 dilution using HEK293 transfected cell lysates at 50 µg per lane; rabbit polyclonal to goat IgG (HRP) at 1/10,000 dilution;

For research use only, not for diagnostic use

SICGEN's Proprietary Immunogen Policy

In order to produce high specific antibodies SICGEN has invested a lot of time and effort into selecting immunogen sequences. SICGEN has decided to protect this information by not publishing it on the website. However, these sequences are available on request.