

**Catalogue No.**

AB2887-100

**Qty:**

300 µg

## Anti-FusionRed

**Source:** Goat

**General description:** Goat polyclonal antibody to FusionRed. FusionRed is a monomeric red fluorescent protein (~26–27 kDa) engineered from coral-derived fluorescent proteins originating from the sea anemone *Entacmaea quadricolor*. It is designed as a low-cytotoxicity, bright reporter suitable for fusion tagging, live-cell imaging, and long-term expression studies. FusionRed is a basic (constitutively fluorescent) protein with improved maturation and reduced phototoxicity compared to earlier red fluorescent proteins. It has a maximum excitation at 580 nm and a maximum emission at 608 nm. FusionRed-tagged proteins can be detected in Western blot at approximately 26–27 kDa plus the molecular weight of the fused protein. In immunofluorescence, antibody staining can enhance detection, particularly in fixed samples or low-expression systems. These antibodies are widely used in studies of protein localization, trafficking, and live-cell imaging, especially where reduced phototoxicity is important.

**Alternative names:** FusionRed1, FusionRed2, FusionRed3, Far-Red antibody.

**Form:** Polyclonal antibody supplied as a 100 µl (3 mg/ml) aliquot in PBS, 20% glycerol and 0.05% sodium azide. This antibody is epitope-affinity purified from goat antiserum.

**Immunogen:** Affinity purified recombinant fluorescent protein produced in *E. coli*.

**Specificity:** In lysates of transfected cells with the plasmid containing the fluorescent sequence, detects the recombinant protein by Western blot.

**Reactivity:** Reacts with Transfected cells proteins

Sample	WB	IHC (F)	IHC (P)	IF	ELISA	IEM
Transfected cells	+++	ND	ND	ND	ND	ND

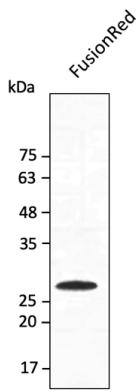
+++ excellent, ++ good, + poor, ND not determined

**Usage:**

WB: 1:500-1:5,000

**Storage:** Store at -20 C for long-term storage. Store at 2-8 C for up to one month.

**Special instructions:** Avoid freeze/thaw cycles..



Anti-FusionRed Ab at 1/2,500 dilution using HEK293 transfected cell lysates at 40 µg per lane; rabbit polyclonal to goat IgG (HRP) at 1/10,000 dilution;

For research use only, not for diagnostic use

**SICGEN's Proprietary Immunogen Policy**

In order to produce high specific antibodies SICGEN has invested a lot of time and effort into selecting immunogen sequences. SICGEN has decided to protect this information by not publishing it on the website. However, these sequences are available on request.