

Catalogue No.

AB1610-100

Qty:

300 µg

Anti-mLychee

Source: Goat

General description: Goat polyclonal antibody to mLychee. mLychee is a monomeric red fluorescent protein (~26–27 kDa) engineered from coral-derived fluorescent proteins originating from the cnidarian *Entacmaea quadricolor*. It is designed as a bright and photostable reporter suitable for fusion tagging, live-cell imaging, and multicolor applications. mLychee is a basic (constitutively fluorescent) protein with efficient maturation and stable fluorescence. It has a maximum excitation at 568 nm and a maximum emission at 596 nm. Due to its origin and structural similarity to other red fluorescent proteins, anti-RFP or anti-KillerRed antibodies generally recognize mLychee, while anti-GFP antibodies do not cross-react efficiently. mLychee-tagged proteins can be detected in Western blot at approximately 26–27 kDa plus the molecular weight of the fused protein. In immunofluorescence, antibody staining can enhance detection, particularly in fixed samples or low-expression systems. These antibodies are widely used in studies of protein localization, trafficking, and live-cell imaging in mammalian and other model systems.

Alternative names: red fluorescent protein antibody.

Form: Polyclonal antibody supplied as a 100 µl (3 mg/ml) aliquot in PBS, 20% glycerol and 0.05% sodium azide. This antibody is epitope-affinity purified from goat antiserum.

Immunogen: Purified recombinant fluorescent protein produced in *E. coli*.

Specificity: In 293HEK cells transfected with cds plasmid detects a band of 27 kDa by Western blot. This antibody does not recognize GFP (green fluorescent protein).

Reactivity: Reacts with Transfected cells proteins

Sample	WB	IHC (F)	IHC (P)	IF	ELISA	IEM
Transfected cells	+++	ND	ND	ND	ND	ND

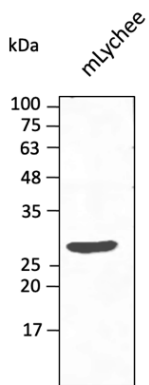
+++ excellent, ++ good, + poor, ND not determined

Usage:

WB: 1:500-1:5,000

Storage: Store at -20 C for long-term storage. Store at 2-8 C for up to one month.

Special instructions: Avoid freeze/thaw cycles..



Anti-mLychee Ab at 1/2,500 dilution using HEK293 transfected cell lysates at 50 µg per lane; rabbit polyclonal to goat IgG (HRP) at 1/10,000 dilution;

For research use only, not for diagnostic use

SICGEN's Proprietary Immunogen Policy

In order to produce high specific antibodies SICGEN has invested a lot of time and effort into selecting immunogen sequences. SICGEN has decided to protect this information by not publishing it on the website. However, these sequences are available on request.