

Catalogue No.

AB9459-100

Qty:

300 µg

Anti-TagBFP

Source: Goat

General description: Goat polyclonal antibody to TagBFP (blue fluorescent protein). TagBFP is a monomeric blue fluorescent protein (~26–27 kDa) engineered from coral-derived fluorescent proteins originating from the sea anemone *Entacmaea quadricolor*, and is widely used as a fusion tag and reporter in live-cell imaging and multicolor experiments. TagBFP is a basic (constitutively fluorescent) blue fluorescent protein published in 2008, derived from *Entacmaea quadricolor*, and is reported to be a very rapidly maturing monomer with very low acid sensitivity. It has a maximum excitation at ~402 nm and a maximum emission at ~457 nm. Unlike GFP-derived proteins, tagBFP is structurally distinct and is not efficiently recognized by anti-GFP antibodies; detection is typically achieved using anti-BFP or anti-RFP/KillerRed-related antibodies, depending on epitope similarity. It is suitable for applications such as Western blot, immunofluorescence, immunoprecipitation, and ELISA. In Western blot analysis, tagBFP-tagged proteins are detected at approximately 26–27 kDa plus the molecular weight of the fused protein. In immunofluorescence, antibody staining can enhance signal detection, particularly in fixed samples or low-expression systems. These antibodies are widely used in multicolor imaging, protein localization, and live-cell studies in mammalian and other model systems.

Alternative names: mTagBFP antibody

Form: Polyclonal antibody supplied as a 100 µl (3 mg/ml) aliquot in PBS, 20% glycerol and 0.05% sodium azide. This antibody is epitope-affinity purified from goat antiserum.

Immunogen: Affinity purified recombinant fluorescent protein produced in *E. coli*.

Specificity: In lysates of transfected cells with the plasmid containing the fluorescent sequence, detects the recombinant protein by Western blot.

Reactivity: Reacts with Transfected cells proteins

Sample	WB	IHC (F)	IHC (P)	IF	ELISA	IEM
Transfected cells	+++	ND	ND	ND	ND	ND

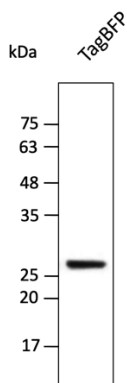
+++ excellent, ++ good, + poor, ND not determined

Usage:

WB: 1:500-1:5,000

Storage: Store at -20 C for long-term storage. Store at 2-8 C for up to one month.

Special instructions: Avoid freeze/thaw cycles..



Anti-TagBFP Ab at 1/2,500 dilution using HEK293 transfected cell lysates at 40 µg per lane; rabbit polyclonal to goat IgG (HRP) at 1/10,000 dilution;

For research use only, not for diagnostic use

SICGEN's Proprietary Immunogen Policy

In order to produce high specific antibodies SICGEN has invested a lot of time and effort into selecting immunogen sequences. SICGEN has decided to protect this information by not publishing it on the website. However, these sequences are available on request.