

Catalogue No.

AB3219-100

Qty:

300 µg

Anti-mStable

Source: Goat

General description: Goat polyclonal antibody to mStable. mStable is a monomeric fluorescent protein (~26–27 kDa) engineered for enhanced structural and photochemical stability, making it suitable as a fusion tag in live-cell imaging and protein tracking applications. It is derived from the cnidarian *Entacmaea quadricolor* and optimized to provide improved resistance to photobleaching and environmental fluctuations. mStable is typically a constitutively fluorescent protein with stable signal output under a range of experimental conditions, with a maximum excitation at 597 nm and a maximum emission at 633 nm. Due to its divergence from classical GFP, cross-reactivity with anti-GFP antibodies may vary, and in some cases, anti-RFP/KillerRed-related or specific antibodies may be required for reliable detection. mStable-tagged proteins can be detected by Western blot at approximately 26–27 kDa plus the molecular weight of the fused protein. In immunofluorescence, antibody-based detection is useful to enhance signal in fixed cells or low-expression systems. These antibodies are widely used in studies of protein localization, trafficking, and long-term live-cell imaging where increased fluorescence stability is advantageous.

Alternative names: RFP antibody.

Form: Polyclonal antibody supplied as a 100 µl (3 mg/ml) aliquot in PBS, 20% glycerol and 0.05% sodium azide. This antibody is epitope-affinity purified from goat antiserum.

Immunogen: Affinity purified recombinant fluorescent protein produced in *E. coli*.

Specificity: In lysates of transfected cells with the plasmid containing the fluorescent sequence, detects the recombinant protein by Western blot.

Reactivity: Reacts with Transfected cells proteins

Sample	WB	IHC (F)	IHC (P)	IF	IEM
Transfected cells	+++	+++	+++	+++	+++

+++ excellent, ++ good, + poor, ND not determined

Usage:

WB: 1:500-1:5,000

IHC (F): 1:50-1:500

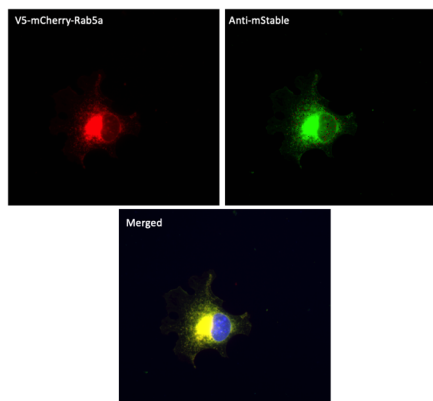
IHC (P): 1:50-1:500

IF: 1:50-1:500

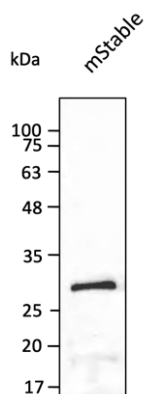
IEM: 1:50-1:500

Storage: Store at -20 C for long-term storage. Store at 2-8 C for up to one month.

Special instructions: Avoid freeze/thaw cycles..



Immunofluorescence –anti-mStable Ab using COS7 cells transduced with mStable plasmid; cells were fixed with methanol and anti-mStable at 1/250;



Anti-mStable Ab at 1/2,500 dilution using HEK293 transfected cell lysates at 40 µg per lane; rabbit polyclonal to goat IgG (HRP) at 1/10,000 dilution;

For research use only, not for diagnostic use

SICGEN's Proprietary Immunogen Policy

In order to produce high specific antibodies SICGEN has invested a lot of time and effort into selecting immunogen sequences. SICGEN has decided to protect this information by not publishing it on the website. However, these sequences are available on request.