

**Catalogue No.**

AB8943-100

**Qty:**

300 µg

## Anti-Electra

**Source:** Goat

**General description:** Electra antibodies are commonly used to detect, quantify, or immunoprecipitate Electra-tagged proteins in recombinant systems. Electra is a basic (constitutively fluorescent) blue fluorescent protein engineered from the cnidarian *Entacmaea quadricolor*, and anti-RFP/KillerRed antibodies may show cross-reactivity depending on the construct. It has a maximum excitation at 402 nm and a maximum emission at 454 nm. In Western blot analysis, Electra1-tagged proteins are detected at approximately 25–30 kDa plus the molecular weight of the fused protein. In immunofluorescence, antibodies are particularly useful to enhance signal after fixation or in low-expression systems, where intrinsic fluorescence may be reduced or altered by experimental conditions. These antibodies are widely used in studies involving protein dynamics, intracellular trafficking, super-resolution imaging, and live-cell tracking, supporting the analysis of spatiotemporal regulation of proteins in mammalian cells and other model systems.

**Alternative names:** Electra1, Electra2 antibody

**Form:** Polyclonal antibody supplied as a 100 µl (3 mg/ml) aliquot in PBS, 20% glycerol and 0.05% sodium azide. This antibody is epitope-affinity purified from goat antiserum.

**Immunogen:** Affinity purified recombinant fluorescent protein produced in *E. coli*.

**Specificity:** In lysates of transfected cells with the plasmid containing the fluorescent sequence, detects the recombinant protein by Western blot.

**Reactivity:** Reacts with Transfected cells proteins

Sample	WB	IHC (F)	IHC (P)	IF	IEM
Transfected cells	+++	+++	+++	+++	+++

+++ excellent, ++ good, + poor, ND not determined

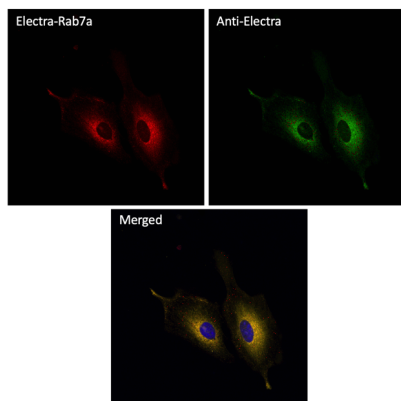
**Usage:**

WB: 1:500-1:5,000  
 IHC (F): 1:50-1:500  
 IHC (P): 1:50-1:500  
 IF: 1:50-1:500

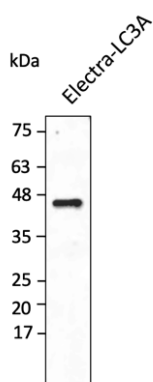
IEM: 1:50-1:500

**Storage:** Store at -20 C for long-term storage. Store at 2-8 C for up to one month.

**Special instructions:** Avoid freeze/thaw cycles..



Immunofluorescence –anti-Electra Ab using HFF cells transduced with Electra-Rab7a; cells were fixed with methanol and anti-Electra at 1/250;



Anti-Electra Ab at 1/2,500 dilution using HEK293 transfected cell lysates at 50 µg per lane; rabbit polyclonal to goat IgG (HRP) at 1/10,000 dilution;

For research use only, not for diagnostic use

#### SICGEN's Proprietary Immunogen Policy

In order to produce high specific antibodies SICGEN has invested a lot of time and effort into selecting immunogen sequences. SICGEN has decided to protect this information by not publishing it on the website. However, these sequences are available on request.