

Catalogue No.

AB9462-100

Qty:

300 µg

mCRISPRed Polyclonal Antibody

Source: Goat

General description: Goat polyclonal antibody to mCRISPRed. mCRISPRed is a monomeric fluorescent protein engineered from coral-derived fluorescent proteins originating from the cnidarian *Entacmaea quadricolor*. It is designed as a bright and photostable reporter suitable for fusion tagging, live-cell imaging, and genome editing applications, including CRISPR-based systems. mCRISPRed is a basic (constitutively fluorescent) protein with efficient maturation and stable fluorescence. It has a maximum excitation at 460 nm and a maximum emission at 592 nm. mCRISPRed-tagged proteins can be detected in Western blot at approximately 26–27 kDa plus the molecular weight of the fused protein. In immunofluorescence, antibody staining can enhance detection, particularly in fixed samples or low-expression systems. These antibodies are widely used in studies of protein localization, gene editing workflows, cellular dynamics, and live-cell imaging in mammalian and other model systems.

Alternative names: mCRISPRed2, far-Red antibody.

Form: Polyclonal antibody supplied as a 100 µl (3 mg/ml) aliquot in PBS, 20% glycerol and 0.05% sodium azide. This antibody is epitope-affinity purified from goat antiserum.

Immunogen: Affinity purified recombinant fluorescent protein produced in *E. coli*.

Specificity: In lysates of transfected cells with the plasmid containing the fluorescent sequence, detects the recombinant protein by Western blot.

Reactivity: Reacts with Transfected cells proteins

Sample	WB	IHC (F)	IHC (P)	IF	IEM
Transfected cells	+++	+++	+++	+++	+++

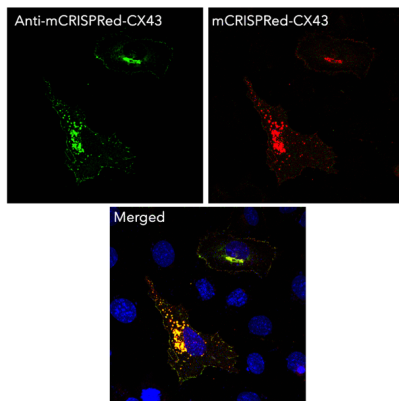
+++ excellent, ++ good, + poor, ND not determined

Usage:

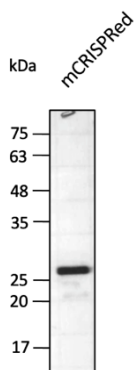
WB: 1:500-1:5,000
IHC (F): 1:50-1:500
IHC (P): 1:50-1:500
IF: 1:50-1:500
IEM: 1:50-1:500

Storage: Store at -20 C for long-term storage. Store at 2-8 C for up to one month.

Special instructions: Avoid freeze/thaw cycles..



Immunofluorescence – anti-mCRISPRed Ab using hCEC cells transduced with mCRISPRed-CX43; cells were fixed with methanol and anti-mCRISPRed at 1/250;



Anti-mCRISPRed Ab at 1/2,500 dilution using HEK293 transfected cell lysates at 50 µg per lane; rabbit polyclonal to goat IgG (HRP) at 1/10,000 dilution;

For research use only, not for diagnostic use

SICGEN's Proprietary Immunogen Policy

In order to produce high specific antibodies SICGEN has invested a lot of time and effort into selecting immunogen sequences. SICGEN has decided to protect this information by not publishing it on the website. However, these sequences are available on request.