

Catalogue No.

AB3176-200

Qty:

600 µg

Anti-Rab8 Pan

Source: Goat

General description: Goat polyclonal antibody to mouse Rab8. Rab8 belongs to the small GTPase superfamily, Rab family. It has cell-type specific function during the process of exocytosis and coordinates regulation of the cytoskeleton. Rab8 also appears to interface with endocytic recycling circuits. At the molecular level, this GTPase regulates both the export of vesicles from the trans-Golgi apparatus, and the directed translocation along actin filaments and microtubules.

Alternative names: RAB8A, RAB8B, RAS-associated protein RAB8A, ras-related protein Rab-8B, ras-related protein Rab-8A, ras-related protein Rab-8B antibody.

Form: Polyclonal antibody supplied as a 200 µl (3 mg/ml) aliquot in PBS, 20% glycerol and 0.05% sodium azide. This antibody is epitope-affinity purified from goat antiserum.

Immunogen: Purified recombinant peptide derived from within residues 107 aa to the C-terminus of mouse Rab8a and Rab8b produced in E. coli.

Specificity: Detects total Rab8 protein in the following human, rat and mouse whole cell lysates and transfected cells with GFP-Rab8a and GFP-Rab8b cds by Western blot.

Reactivity: Reacts with Human, Rat, Mouse, Monkey and Canine proteins

Sample	WB	IHC (F)	IHC (P)	IF	ELISA
Human	+++	+++	+++	+++	ND
Rat	+++	+++	+++	+++	ND
Canine	+++	+++	+++	+++	ND
Monkey	+++	+++	+++	+++	ND
Mouse	+++	+++	+++	+++	ND

+++ excellent, ++ good, + poor, ND not determined

Usage:

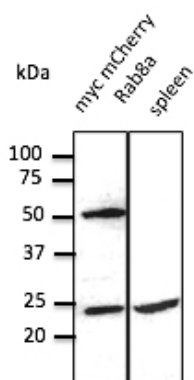
WB: 1:250-1:1,000
IHC (F): 1:250-1:1,500
IHC (P): 1:250-1:1,500
IF: 1:50-1:250
ELISA: ND

Storage: For continuous use, store at 2-8 C for one-two days. For extended storage, store in -20 C freezer. Working dilution samples should be discarded if not used within 12 hours.

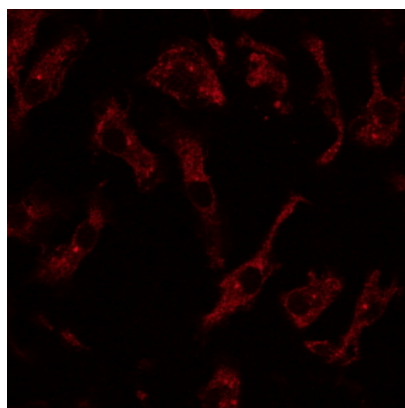
Special instructions: The antibody solution should be gently mixed before use..

References:

1. Schiweck J, Murk K, Ledderose J, et al. Nat Commun 2021 Mar PMID: 33674568
2. Battle von Isabell, PhD Thesis, Berlin, Germany 2023
3. Schiweck J, Murk K, Ledderose J, et al. bioRxiv 2020



Anti-Rab8 Ab at 1/500 dilution; lysates at 50 µg per lane; rabbit polyclonal to goat IgG (HRP) at 1/10,000 dilution;



Immunofluorescence – anti-Rab8 Ab at 1/100 dilution using primary macrophages; cells were fixed with 4% of PFA;

For research use only, not for diagnostic use

SICGEN's Proprietary Immunogen Policy

In order to produce high specific antibodies SICGEN has invested a lot of time and effort into selecting immunogen sequences. SICGEN has decided to protect this information by not publishing it on the website. However, these sequences are available on request.