

**Catalogue No.**

 AB3035-200  
 AB3035-500

**Qty:**

 600 µg  
 1.5 mg

## Anti-Rab11 Pan

**Source:** Goat

**General description:** Goat polyclonal antibody to mouse Rab11. Rab11 belongs to the small GTPase superfamily, Rab family. The protein is membrane-bound and plays essential roles in vesicle and granule targeting. It has been shown that Rab11 associates with recycling endosomes.

**Alternative names:** CATX-8, GTP-binding protein YPT3, member of RAS oncogene family, MGC1490, Rab11, RAB11A, RAB11B, RAB11C, Rab25, ras-related protein Rab-11B, RB11A, YL8 antibody.

**Form:** Polyclonal antibody supplied as a 200 or 500 µl (3 mg/ml) aliquot in PBS, 20% glycerol and 0.05% sodium azide. This antibody is epitope-affinity purified from goat antiserum.

**Immunogen:** Purified recombinant peptides derived from within residues 110 aa to the C-terminus of mouse Rab11a, Rab11b and Rab11c (Rab25) produced in E. coli.

**Specificity:** Detects levels of Rab11 by Western blot in the following human, rat and mouse whole cell lysates and transfected cells with GFP-Rab11a, GFP-Rab11b and GFP-Rab11c (Rab25) cds.

**Reactivity:** Reacts with Human, Rat, Mouse, Monkey and Canine proteins

Sample	WB	IHC (F)	IHC (P)	IF	ELISA
Human	+++	+++	+++	ND	ND
Rat	+++	+++	+++	ND	ND
Mouse	+++	+++	+++	ND	ND
Canine	+++	+++	+++	ND	ND
Monkey	+++	+++	+++	ND	ND

+++ excellent, ++ good, + poor, ND not determined

**Usage:**

WB: 1:250-1:2,000

IHC (F): 1:100-1:400

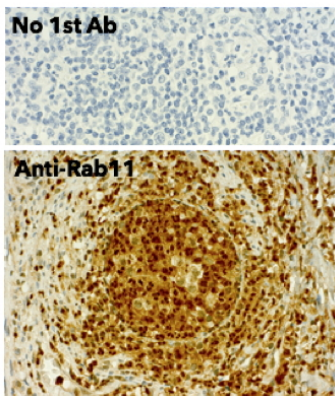
IHC (P): 1:100-1:400

**Storage:** For continuous use, store at 2-8 C for one-two days. For extended storage, store in -20 C freezer. Working dilution samples should be discarded if not used within 12 hours.

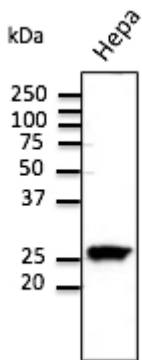
**Special instructions:** The antibody solution should be gently mixed before use..

## References:

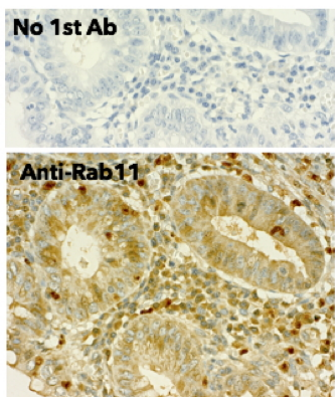
1. Deissler HL, Sommer K, Lang GK, et al. Exp Eye Res 2020 Jul PMID: 32712182
2. Deissler HL, Lang GK and Lang GE. Graefes Arch Clin Exp Ophthalmol 2018 Oct. PMID: 30367290



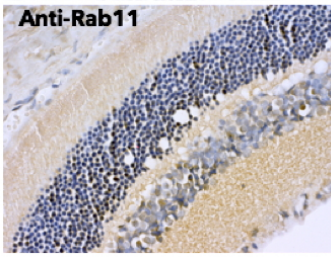
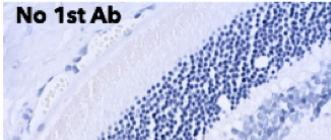
IHC of human appendix using anti-Rab11 pan antibody and FFPE tissue after heat-induced antigen retrieval. Anti-Rab11 Ab at 1:500/DAB detection;



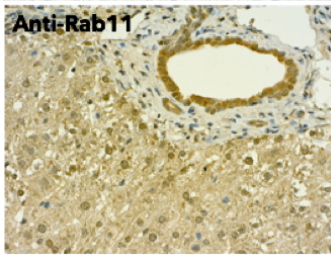
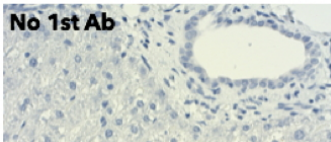
Anti-Rab11 Ab at 1/500 dilution; Hepa cell line lysates at 100 µg per lane; rabbit polyclonal to goat IgG (HRP) at 1/10,000 dilution;



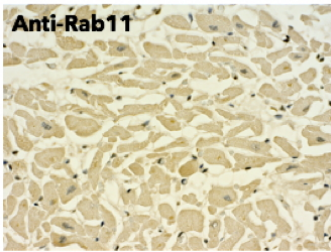
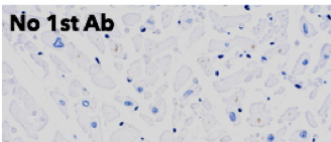
IHC of human appendix using anti-Rab11 pan antibody and FFPE tissue after heat-induced antigen retrieval. Anti-Rab11 Ab at 1:500/DAB detection;



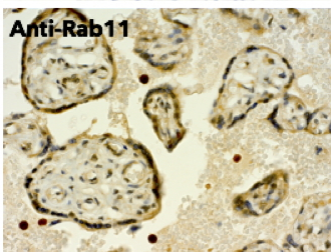
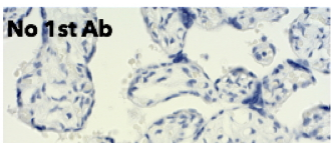
IHC of rat eye using anti-Rab11 pan antibody and FFPE tissue after heat-induced antigen retrieval. Anti-Rab11 Ab at 1:500/DAB detection;



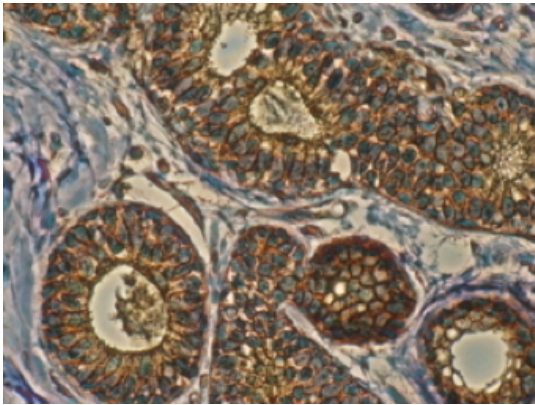
IHC of mouse liver using anti-Rab11 pan antibody and FFPE tissue after heat-induced antigen retrieval. Anti-Rab11 Ab at 1:500/DAB detection;



IHC of human myocardium using anti-Rab11 pan antibody and FFPE tissue after heat-induced antigen retrieval. Anti-Rab11 Ab at 1:500/DAB detection;



IHC of human placenta using anti-Rab11 pan antibody and FFPE tissue after heat-induced antigen retrieval. Anti-Rab11 Ab at 1:500/DAB detection;



Anti-Rab11 antibody IHC staining of human mammary tissue; immunohistochemistry of formalin-fixed, paraffin-embedded tissue after heat-induced antigen retrieval; antibody concentration 1/200;

For research use only, not for diagnostic use

**SICGEN's Proprietary Immunogen Policy**

In order to produce high specific antibodies SICGEN has invested a lot of time and effort into selecting immunogen sequences. SICGEN has decided to protect this information by not publishing it on the website. However, these sequences are available on request.