

Catalogue No.

AB1140-100

Qty:

300 µg

Anti-RFP

Source: Goat

General description: Goat polyclonal antibody to RFP (Red fluorescent protein). RFP is derived from DsRed, an engineered red fluorescent protein from so-called disc corals of the genus *Discosoma*.

Alternative names: Cherry fluorescent protein; dsRed, red fluorescent protein, tdTomato antibody.

Form: Polyclonal antibody supplied as a 100 µl (3 mg/ml) aliquot in PBS, 20% glycerol and 0.05% sodium azide. This antibody is epitope-affinity purified from goat antiserum.

Immunogen: Purified recombinant RFP peptide produced in *E. coli*.

Specificity: In 293HEK cells transfected with cds plasmid detects a band of 29 kDa by Western blot. This antibody also recognizes very well tdTomato and does not cross-react to GFP (green fluorescent protein).

Reactivity: Reacts with Transfected cells proteins

Sample	WB	IHC (F)	IHC (P)	IF	ELISA	IEM
Transfected cells	+++	+++	+++	+++	ND	+++

+++ excellent, ++ good, + poor, ND not determined

Usage:

WB: 1:500-1:2,000

IHC (F): 1:50-1:500

IHC (P): 1:50-1:500

IF: 1:50-1:500

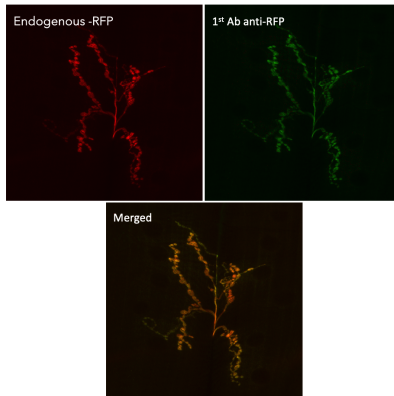
ELISA: ND

Storage: For continuous use, store at 2-8 C for one-two days. For extended storage, store in -20 C freezer. Working dilution samples should be discarded if not used within 12 hours.

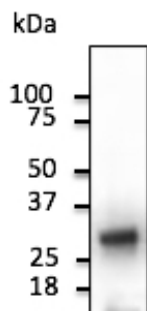
Special instructions: The antibody solution should be gently mixed before use..

References:

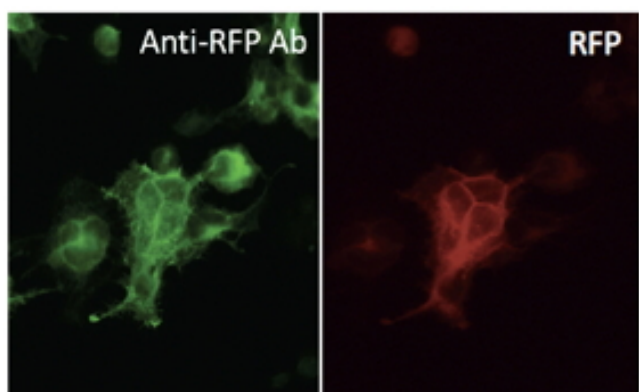
1. Tan Z, Kong M, Wen S, et al. J Bone Miner Res 2020 Jul PMID: 32662900
2. Endo T, Kadoya K, Suzuki Y, et al. Front Cell Neurosci 2019 Jun PMID: 31316351
3. Jiang D, Correa-Gallegos D, Christ S, et al. Nature Cell Biology 2018 Apr PMID: 29593327
4. Tian DS, Peng J, Murugan M, et al. J Neurosci 2017 Aug PMID: 28716963
5. Semerci F, Choi WT, Bajic A, et al. Elife 2017 Jul PMID: 28699891
6. Suzuki T, Kadoya K, Endo T, et al. Cell Mol Neurobiol 2022 Oct PMID: 36222946
7. Wu J, Zhao Z, Shi Y, et al. J Mol Neurosci 2022 Jun PMID: 35708842
8. Endo T, Kadoya K, Suzuki T, et al. NPJ Regen Med 2022 Jan PMID: 35091563
9. Dinwoodie O, PhD Thesis, King's College London, UK 2024



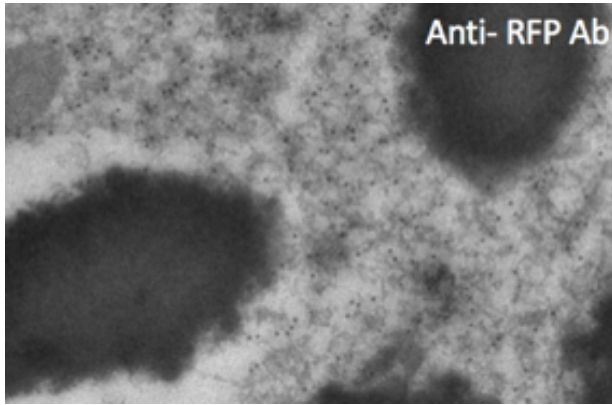
Immunofluorescence in *Drosophila* larvae NMJ muscle 6/7 expressing RFP in neurons (DyGlutRFP) using 1st Ab anti-RFP at 1/1,000 and 2nd Ab anti-goat IgY conjugated to DyLight@488 at 1/500;



Anti-RFP Ab at 1/2,000 dilution; 293HEK cells transduced with RFP Ad; lysates at 50 µg per lane; rabbit polyclonal to goat IgG (HRP) at 1/10,000 dilution;



Immunofluorescence – anti-RFP Ab in 293HEK cells transfected with RFP at 1/50 dilution; cells were fixed with 4% of PFA;



Immunogold labeling of epithelium cells, in vivo injected with RFP expressing vector;

For research use only, not for diagnostic use

SICGEN's Proprietary Immunogen Policy

In order to produce high specific antibodies SICGEN has invested a lot of time and effort into selecting immunogen sequences. SICGEN has decided to protect this information by not publishing it on the website. However, these sequences are available on request.