

Catalogue No.

AB10032-200

Qty:

600 µg

Anti-Rab3 Pan

Source: Goat

General description: Goat polyclonal antibody to mouse Rab3. Rab3 belongs to the small GTPase superfamily, Rab family. Rab3 is involved in exocytosis by regulating a late step in synaptic vesicle fusion. Could play a role in neurotransmitter release by regulating membrane flow in the nerve terminal.

Alternative names: RAB3A, RAB3B, RAB3C, RAB3D, RAS-associated protein RAB3A, ras-related protein Rab-3B, RAS-associated protein RAB3C, RAS-associated protein RAB3D, ras-related protein Rab-3A, ras-related protein Rab-3B, ras-related protein Rab-3C, ras-related protein Rab-3D antibody.

Form: Polyclonal antibody supplied as a 200 µl (3 mg/ml) aliquot in PBS, 20% glycerol and 0.05% sodium azide. This antibody is epitope-affinity purified from goat antiserum.

Immunogen: Purified recombinant peptides derived from within residues 110 aa to the C-terminus of mouse Rab3a produced in E. coli.

Specificity: Detects total Rab3 protein in the following human, rat and mouse whole cell lysates and transfected cells with GFP-Rab3a, GFP-Rab3b, and GFP-Rab3c cds by Western blot.

Reactivity: Reacts with Human, Rat, Mouse, Monkey and Canine proteins

Sample	WB	IHC (F)	IHC (P)	IF	ELISA
Human	+++	+++	+++	+++	ND
Rat	+++	+++	+++	+++	ND
Mouse	+++	+++	+++	+++	ND
Monkey	+++	+++	+++	+++	ND
Canine	+++	+++	+++	+++	ND

+++ excellent, ++ good, + poor, ND not determined

Usage:

WB: 1:250-1:1,000

IHC (F): 1:250-1:1,500

IHC (P): 1:250-1:1,500

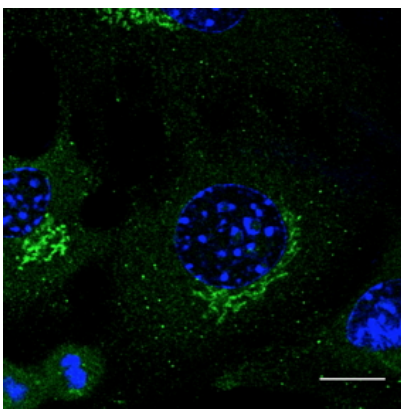
IF: 1:50-1:250

Storage: For continuous use, store at 2-8 C for one-two days. For extended storage, store in -20 C freezer. Working dilution samples should be discarded if not used within 12 hours.

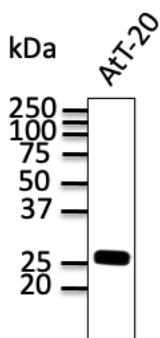
Special instructions: The antibody solution should be gently mixed before use..

References:

1. Encarnação M, Espada L, Escrevente C, et al. J Cell Biol. 2016 Jun. PMID: 27325790



Immunofluorescence – anti-Rab3 Ab in B6 cells at 1/50 dilution; cells were fixed with methanol;



Anti-Rab3 Ab at 1/500 dilution; AtT-20 cell line lysates at 100 µg per lane; rabbit polyclonal to goat IgG (HRP) at 1/10,000 dilution;

For research use only, not for diagnostic use

SICGEN's Proprietary Immunogen Policy

In order to produce high specific antibodies SICGEN has invested a lot of time and effort into selecting immunogen sequences. SICGEN has decided to protect this information by not publishing it on the website. However, these sequences are available on request.