

**Catalogue No.**

AB10021-200

**Qty:**

400 µg

## Anti-Rab2 Pan

**Source:** Goat

**General description:** RAB2 belongs to the large RAB family of low molecular weight GTPases that are involved in intracellular membrane trafficking. It has been demonstrated that Rab2 is essential for the maturation of pre-Golgi intermediates. RAB2A and RAB2B are required for protein transport from the ER to the Golgi, RAB2A is lipid-anchored to the ER-Golgi intermediate compartment membrane while RAB2B is lipid anchored to the cytoplasmic side of the cell membrane. RAB2A has been shown to interact with GOLGA2.

**Alternative names:** Ras-related protein Rab-2A, Ras-related protein Rab-2B antibody.

**Form:** Polyclonal antibody supplied as a 200 µl (2 mg/ml) aliquot in PBS, 20% glycerol and 0.05% sodium azide. This antibody is epitope-affinity purified from goat antiserum.

**Immunogen:** Purified recombinant peptide derived from within residues 110 aa to the C-terminus of mouse Rab2b produced in E. coli.

**Specificity:** Detects total levels of Rab2 protein in transfected cells with GFP-Rab2a and GFP-Rab2b by Western blot.

**Reactivity:** Reacts with Human, Rat, Mouse, Monkey and Canine proteins

Sample	WB	IHC (F)	IHC (P)	IF	ELISA
Human	+++	ND	ND	ND	ND
Rat	+++	ND	ND	ND	ND
Mouse	+++	ND	ND	ND	ND
Monkey	+++	ND	ND	ND	ND
Canine	+++	ND	ND	ND	ND

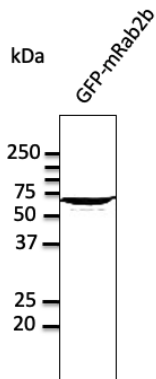
+++ excellent, ++ good, + poor, ND not determined

**Usage:**

WB: 1:250-1:2,000

**Storage:** For continuous use, store at 2-8 C for one-two days. For extended storage, store in -20 C freezer. Working dilution samples should be discarded if not used within 12 hours.

**Special instructions:** The antibody solution should be gently mixed before use..



Anti-Rab2 Pan Ab at 1/1,000 dilution; HEK293 cells transfected with GFP-Rab2b; lysates at 50 µg per lane; rabbit polyclonal to goat IgG (HRP) at 1/10,000 dilution;

For research use only, not for diagnostic use

#### SICGEN's Proprietary Immunogen Policy

In order to produce high specific antibodies SICGEN has invested a lot of time and effort into selecting immunogen sequences. SICGEN has decided to protect this information by not publishing it on the website. However, these sequences are available on request.