

**Catalogue No.**

AB0398-100

**Qty:**

300 µg

## Anti-NSP16 (SARS-CoV-2)

**Source:** Goat

**General description:** Nsp16 is part of the multifunctional protein replicase polyprotein 1ab that is involved in the transcription and replication of viral RNA. This non-structural protein has methyltransferase activity playing an essential role in viral mRNAs cap methylation which is essential to evade immune system.

**Alternative names:** methyltransferase, Nsp16 SARS Coronavirus-2 antibody.

**Form:** Polyclonal antibody supplied as a 100 µl (3 mg/ml) aliquot in PBS, 20% glycerol and 0.05% sodium azide. This antibody is epitope-affinity purified from goat antiserum.

**Immunogen:** Affinity purified recombinant fusion protein using the N-terminal of Nsp16 (residues 1 to 140) and produced in E. coli.

**Specificity:** In lysates of transfected cells with the plasmid containing the sequence used, detects the fusion protein by Western blot.

**Reactivity:** Reacts with Transfected cells proteins

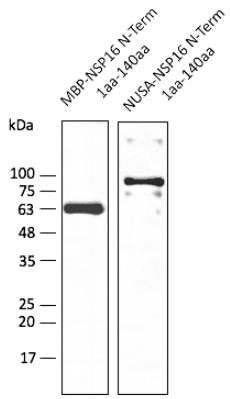
Sample	WB	IHC (F)	IHC (P)	IF	ELISA
Transfected cells	+++	ND	ND	ND	ND

+++ excellent, ++ good, + poor, ND not determined

**Usage:**

**Storage:** For continuous use, store at 2-8 C for one-two days. For extended storage, store in -20 C freezer. Working dilution samples should be discarded if not used within 12 hours.

**Special instructions:** The antibody solution should be gently mixed before use..



Anti-NSP16 Ab at 1/2,500 dilution; lane with 30 ng of recombinant fusion protein; rabbit polyclonal to goat IgG (HRP) at 1/10,000 dilution;

For research use only, not for diagnostic use

#### SICGEN's Proprietary Immunogen Policy

In order to produce high specific antibodies SICGEN has invested a lot of time and effort into selecting immunogen sequences. SICGEN has decided to protect this information by not publishing it on the website. However, these sequences are available on request.