

Catalogue No.

AB0333-100

Qty:

300 µg

Anti-OCLN

Source: Goat

General description: Goat polyclonal antibody to Occludin. OCLN is an integral membrane protein that is required for cytokine-induced regulation of the tight junction paracellular permeability barrier.

Alternative names: BLCPMG, Occludin, PTORCH1, PPP1R115 antibody.

Form: Polyclonal antibody supplied as a 100 µl (3 mg/ml) aliquot in PBS, 20% glycerol and 0.05% sodium azide. This antibody is epitope-affinity purified from goat antiserum.

Immunogen: Peptide derived from within residues 500 aa to the C-terminus of human Occludin.

Specificity: Detects endogenous levels of OCLN in MCR, IMCD3, COS7, MDCK, HUH, HEK293, MCF7, mouse brain by Western blot.

Reactivity: Reacts with Human, Rat, Mouse, Monkey and Canine proteins

Sample	WB	IHC (F)	IHC (P)	IF	ELISA
Human	+++	+++	+++	ND	ND
Rat	+++	+++	+++	ND	ND
Mouse	+++	+++	+++	ND	ND
Canine	+++	+++	+++	ND	ND
Monkey	+++	+++	+++	ND	ND

+++ excellent, ++ good, + poor, ND not determined

Usage:

WB: 1:500-1:2,000

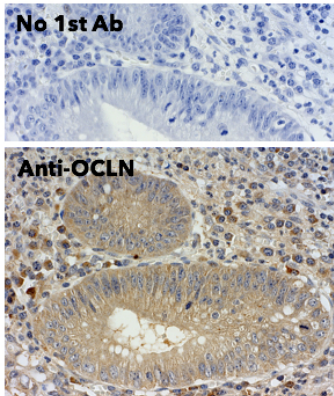
IHC (F): 1:250-1:1,000

IHC (P): 1:250-1:1,000

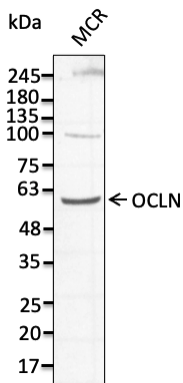
Storage: For continuous use, store at 2-8 C for one-two days. For extended storage, store in -20 C freezer.

Working dilution samples should be discarded if not used within 12 hours.

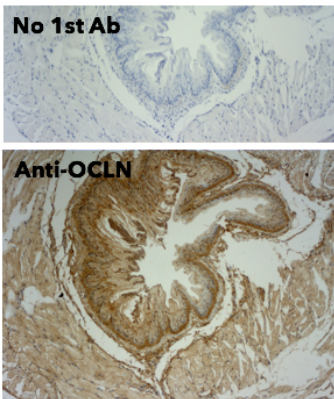
Special instructions: The antibody solution should be gently mixed before use..



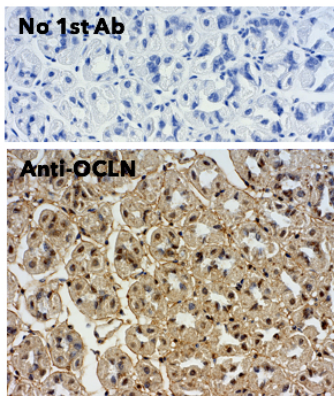
IHC of human appendix using anti-OCLN antibody and FFPE tissue after heat-induced antigen retrieval. Anti-OCLN Ab at 1:500/DAB detection;



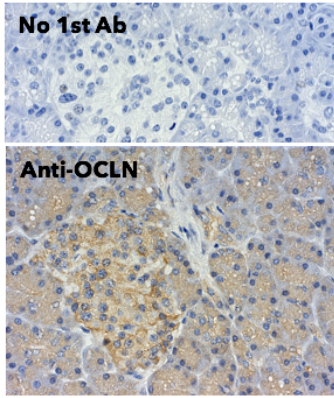
Anti-OCLN Ab at 1/1,000 dilution; lysates at 50 µg per lane; rabbit polyclonal to goat IgG (HRP) at 1/10,000 dilution;



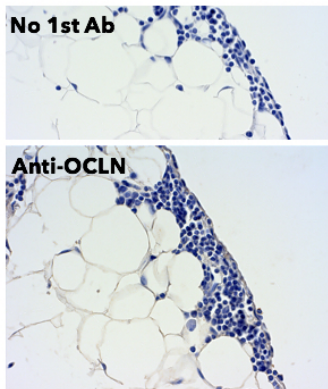
IHC of mouse stomach using anti-OCLN antibody and FFPE tissue after heat-induced antigen retrieval. Anti-OCLN Ab at 1:500/DAB detection;



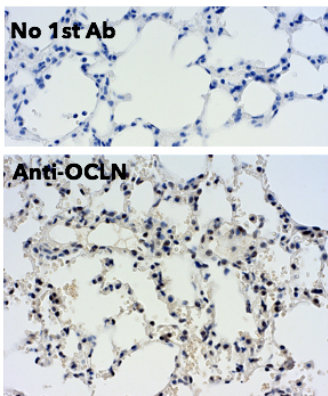
IHC of mouse stomach using anti-OCLN antibody and FFPE tissue after heat-induced antigen retrieval. Anti-OCLN Ab at 1:500/DAB detection;



IHC of human pancreas using anti-OCLN antibody and FFPE tissue after heat-induced antigenretrieval. Anti-OCLN Ab at 1:500/DAB detection;



IHC of rat adipose tissue using anti-OCLN antibody and FFPE tissue after heat-induced antigen retrieval. Anti-OCLN Ab at 1:500/DAB detection;



IHC of mouse lung using anti-OCLN antibody and FFPE tissue after heat-induced antigen retrieval. Anti-OCLN Ab at 1:500/DAB detection;

For research use only, not for diagnostic use

SICGEN's Proprietary Immunogen Policy

In order to produce high specific antibodies SICGEN has invested a lot of time and effort into selecting immunogen sequences. SICGEN has decided to protect this information by not publishing it on the website. However, these sequences are available on request.