

Catalogue No.

AB0328-100

Qty:

300 µg

Anti-NPY2R

Source: Goat

General description: Goat polyclonal antibody to NPY2R. Neuropeptide Y Receptor type 2 is a member of a family of Gi/o-protein-coupled receptors that are currently divided into four subtypes: Y1, Y2, Y4 and Y5. These members are receptors for neuropeptide Y and peptide YY. These proteins mediate a diverse range of biological functions including stimulation of food intake and modulation of circadian rhythm.

Alternative names: Y2 Receptor, NPY-Y2 Receptor, Neuropeptide Y receptor type 2 antibody.

Form: Polyclonal antibody supplied as a 100 µl (3 mg/ml) aliquot in PBS, 20% glycerol and 0.05% sodium azide. This antibody is epitope-affinity purified from goat antiserum.

Immunogen: Peptide derived from within residues 355 aa to the C-terminus of human NPY2R protein.

Specificity: Detects endogenous levels of NPY2R by Western blot.

Reactivity: Reacts with Human, Rat, Mouse, Monkey and Canine proteins

Sample	WB	IHC (F)	IHC (P)	IF	ELISA
Human	+++	ND	ND	ND	ND
Rat	+++	ND	ND	ND	ND
Mouse	+++	ND	ND	ND	ND
Canine	+++	ND	ND	ND	ND
Monkey	+++	ND	ND	ND	ND

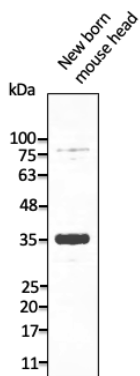
+++ excellent, ++ good, + poor, ND not determined

Usage:

WB: 1:500-1:2,000

Storage: For continuous use, store at 2-8 C for one-two days. For extended storage, store in -20 C freezer. Working dilution samples should be discarded if not used within 12 hours.

Special instructions: The antibody solution should be gently mixed before use..



Anti-NPY2R Ab at 1/1,000 dilution; lysates at 50 μ g per lane; rabbit polyclonal to goat IgG (HRP) at 1/10,000 dilution;

For research use only, not for diagnostic use

SICGEN's Proprietary Immunogen Policy

In order to produce high specific antibodies SICGEN has invested a lot of time and effort into selecting immunogen sequences. SICGEN has decided to protect this information by not publishing it on the website. However, these sequences are available on request.