

**Catalogue No.** AB0012-200

**Qty:** 800 µg (4 mg/ml)

## Rab5b Polyclonal Antibody

**Source:** Goat

**General description:** Goat polyclonal antibody to mouse Rab5b. Rab5b belongs to the small GTPase superfamily, Rab family. Rab5b is an Early Endosome Marker and functions as a key regulator of vesicular trafficking during early endocytosis.

**Alternative names:** RAB5B, RAS-associated protein RAB5B, ras-related protein Rab-5B antibody.

**Form:** Polyclonal antibody supplied as a 200 µl (4 mg/ml) aliquot in PBS, 20% glycerol and 0.05%

sodium azide. This antibody is epitope-affinity purified from goat antiserum.

**Immunogen:** Purified recombinant peptide derived from within residues 115 aa to the C-terminus of mouse Rab5b produced in *E. coli*.

**Specificity:** Detects Rab5b protein by Western blot in cell lysates of transfected cells with GFP-Rab5b. This Ab is specific for Rab5b; it does not recognize Rab5a and Rab5c.

**Reactivity:** Reacts against human, rat, mouse, canine and monkey proteins.

Sample	WB	IHC (p)	IHC (f)	IF	ELISA
human	+++	ND	ND	+++	ND
rat	+++	ND	ND	+++	ND
mouse	+++	ND	ND	+++	ND
canine	+++	ND	ND	+++	ND
monkey	+++	ND	ND	+++	ND

+++ excellent, ++ good, + poor, ND not determined

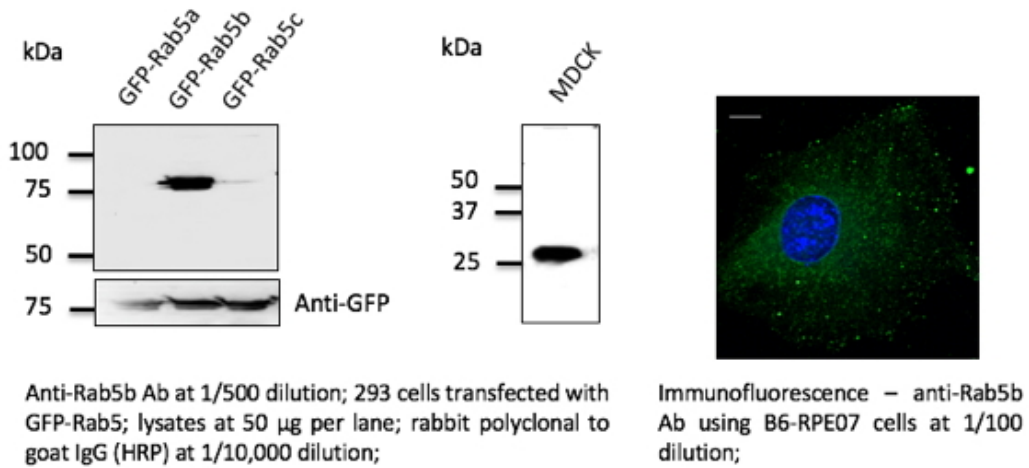
**Usage:** Western blot 1:250-1:1,000  
 Immunofluorescence 1:50-1:250  
 Immunohistochemistry (paraffin) ND  
 Immunohistochemistry (frozen) ND

**Storage:** Store at -20 C for long-term storage. Store at 2-8 C for up to one month.

**Special instructions:** Avoid freeze/thaw cycles.

## References:

1. Cardoso MHS, PhD Thesis, NOVA University of Lisbon, Portugal 2018



For research use only, not for diagnostic use

### SICGEN's Proprietary Immunogen Policy

In order to produce high specific antibodies SICGEN has invested a lot of time and effort into selecting immunogen sequences. SICGEN has decided to protect this information by not publishing it on the website. However, these sequences are available on request.